

GFP Tag(8C1)单克隆抗体

货号: BN20610

规格: 100 μ l

背景: 绿色荧光蛋白是一种从维多利亚多管发光水母中提取的 27kD 的蛋白质。无论是在真核或原核细胞中表达，当被蓝光或紫外光激发时，GFP 均产生亮绿色荧光。荧光蛋白及其等位基因突变体可以发出蓝色，蓝绿色和黄色荧光，变成一个无处不在的（荧光标签蛋白）工具。有许多重组蛋白标记 GFP 标签，以便于蛋白的检测、分离和纯化。

产品名称: GFP (8C1)单克隆抗体，来源于小鼠。

来源: GFP 标签抗体是将合成的 GFP 标签多肽偶联到 KLH 上之后，免疫动物产生的抗体。

浓度组分: 0.5mg/ml 溶解在 pH7.4 的 PBS 溶液中，包含 0.02%的叠氮钠和 50%甘油

应用: WB;Dot;ELISA

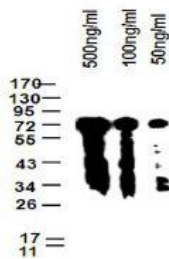
推荐稀释浓度: 1:500-1:5000

同种型: 小鼠 IgG1

外观/储存/特异性: 液体/-20 $^{\circ}$ C/所有物种

检测图

Anti-GFP Tag Monoclonal Antibody



Western blot 分析不同浓度的 GFP 标签抗体

WESTERN BLOTS

封闭:

用 5%脱脂奶粉（1XPBS）溶液孵育膜，4 $^{\circ}$ C，过夜

抗体孵育:

用 5%脱脂奶粉（1XTBS,0.1% 吐温 20）溶液稀释抗体，室温,30min

Anti-GFP Tag(8C1) Monoclonal Antibody

Code Number: BN20610

Size: 100 μ l

BACKGROUND: Green fluorescent protein is a 27kD protein, derived from the bioluminescent jellyfish *Aequorea Victoria*. When expressed in either eukaryotic or prokaryotic cells and illuminated by blue or UV light, GFP yields a bright green fluorescence. Fluorescent proteins and its mutated allelic forms, blue, cyan and yellow have become a useful and ubiquitous tool where they function as a fluorescent protein tag. Many recombinant proteins have been engineered with GFP tags to facilitate the detection, isolation and purification of the proteins.

PRODUCT NAME: Anti-GFP Tag(8C1) Monoclonal Antibody
Produced in Mouse

SOURCE: This antibody is produced by immunizing animals with a synthetic GFP tag peptide corresponding to KLH.

CONCENTRATION: 0.5mg/ml in PBS, pH7.4, containing 0.02% Sodium Azide and 50% glycerol

APPLICATIONS: WB;Dot;ELISA

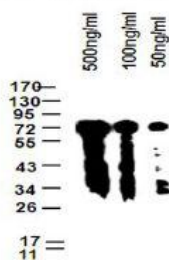
RECOMMENDED DILUTION: 1:500-1:5000

ISOTYPE: Mouse IgG1

FORM/STORAGE/SPECIFICITY: Liquid/-20 $^{\circ}$ C/All species

TESTING IMAGE

Anti-GFP Tag Monoclonal Antibody



Western blot analysis of different concentration of Anti-GFP Tag(8C1) Monoclonal Antibody

FOR WESTERN BLOTS

Blocking:

Incubate the membrane with 5% Non-Fat Milk 1xPBS, 4 $^{\circ}$ C, overnight

Antibody Incubation:

Diluted antibody in 5% Non-Fat Milk

1XTBS, 0.1% Tween-20, RT, 30min